



FireGuard Slim™

Fire-Rated Accordion Folding Doors

MAXIMIZE NARROW CORRIDORS AND REIMAGINE SMALLER OPENINGS
AT A REMARKABLY LOW PRICE



FireGuard Slim

Swing into savings and stunning designs... without the swing.

FireGuard Slim™

Invisible Fire Protection
in Smaller Openings



Cambria Hotel, Nashville, TN



Petersen Auto Museum, Los Angeles, CA



2

USTA Training Center, Orlando, FL

Won-Door™ has created a revolutionary new product guaranteed to give design professionals the freedom to create more open and free-flowing architecture, comply with rigid building codes and protect valuable property and occupants. All the while, Won-Door will provide such pioneering products at competitive and affordable price points.

Remains hidden until needed and
deployed when activated by a fire
alarm or smoke detector.



BEFORE



AFTER

North Atlanta High School Lakeside, Atlanta, GA

Instead of openings that look like this...

... imagine designing openings that look like this at the same cost as swinging doors!

Engineered to Fit Your Needs

Introducing **FireGuard Slim**, an accordion fire door specifically engineered to replace swinging doors in the exact same opening. **FireGuard Slim** provides all of the same performance, safety and durability advances you've come to expect from the **FireGuard** line of products, but in a more compact footprint with a mere 14" of stack depth required. This makes it the ideal solution for narrow corridor applications. Like all Won-Door products, **Slim** is approved for use as a means of egress by the IBC and NFPA.

A SENSIBLE ALTERNATIVE TO SWING DOORS AT AN AFFORDABLE PRICE

FireGuard Slim is a superior alternative to fire-rated swing doors because it surpasses the commonly specified, traditional swing door solution in just about every meaningful performance category, while providing a cleaner, more minimalist look that does not distract from the architect's vision. Take a look at the side-by-side comparison and judge for yourself.

FireGuard Slim is available at a cost of less than \$10k furnished and installed for most openings. FireGuard Slim comes standard with a two-year warranty.

NEW **iSPECIFY** It™

Spec building has never been easier

iSpecifyIt™ is a cutting-edge interactive architectural tool that was developed to help you find your optimal door solution and build a detailed ready-to-submit 3-part spec within minutes. By optimizing the search and specification process, iSpecifyIt maximizes your productivity and connects you to your design team members so you can collaborate and optimize your submittals.

<https://ispecifyit.hortondoors.com/product-types>

Small Openings Meet Great Visual Appeal



333 On The Park, Luxury Apartments, St. Paul, MN



4 Legacy High School, Von Omry, TX

FireGuard Slim is the Right Choice for Your Next Project

FOOTPRINT: Slim achieves an industry-leading 14" stack depth while offering widths up to 9' and heights of 7' or 8'.

VISUAL DESIGN: Wide, cleaner openings help you enhance project aesthetics, improve daylighting and achieve your architectural vision.

DURABILITY: No exposed hardware resulting in less wear and tear.

TRAFFIC FLOW: Virtually "invisible" design maximizes clearance providing for unfettered pedestrian access.

AFFORDABILITY: Modular design allows for easy installation and in-place reparability using basic tools.

MAINTENANCE: Hygienic design with minimal touchpoints makes it easier to maintain and keep clean. Includes two-year warranty comprised of annual inspections and certification.

CODE-COMPLIANT: The first fire-rated accordion door compact enough to fulfill all building safety requirements formerly only satisfied by swing doors.



North Atlanta High School Lakeside, Atlanta, GA

Unmatched Performance, Exceptional Value and Appealing Aesthetics vs. Alternatives

FireGuard Slim has these compelling advantages over traditional swinging doors:

BENEFITS

- Given the complexities surrounding a pair of double-egress swinging doors on magnetic hold-opens, Slim is an attractive and competitively priced solution.
- When not in use and stacked in the open position, Slim goes unnoticed by building occupants. Swinging doors are not only noticed as they protrude into the corridor but must be actively avoided and can cause significant bottle-necking during high traffic scenarios.
- This same unobtrusive benefit of Slim will also result in decreased maintenance over the life of the product. Facility managers no longer worry about exposed components like metal frames, door hardware, astragals, magnetic hold-opens and other associated accessories.
- Slim is also designed to accelerate installation sequencing and service, meaning less time on the project site, saving time and money.
- Opening the corridor width with FireGuard Slim contributes to improved daylighting, unobstructed views and unhindered traffic flow.
- Slim's hygienic design virtually eliminates touchpoints for simplified cleaning practices and more sanitary surfaces.

CASE STUDY



Application

Corridor Separation

Project

Alexan Montview Plaza
Aurora, Colorado

Architect

JHP Architecture/Urban Design

Project Scope

This five-story luxury apartment building just east of Denver utilized the cost-effective and space-saving design of Won-Door's FireGuard Slim fire-rated door in a number of cross corridor applications in the building. The building required double-egress swing doors at the fire separation, but the corridor is too narrow to accommodate code-complying, opposite swinging doors to achieve the mandated egress width. Slim offers code-compliant egress in both directions and is the only fire door solution for corridors that are less than 6' wide and perfect for all corridors up to 9' wide. Notice that the fully-open, accordion door leaves no exposed hardware.

Typical Applications



Wasserman Football Center at UCLA, Los Angeles, California

CORRIDOR SEPARATION

FireGuard Slim is an ideal solution for architects and specifiers when fire separations in a corridor are mandated. These compact accordion folding doors allow a corridor to be built at its minimum width to reclaim living and working spaces while increasing lease value.



Wasserman Football Center at UCLA, Los Angeles, California

SE MODEL

As many of these types of openings occur at the face of an elevator AND building codes stipulate the protection of the elevator hoistway as a vertical opening, Won-Door has further advanced FireGuard Slim to fulfill the necessary regulatory requirements and still allow for the unencumbered flow of elevator traffic.

Not all applications will require an elevator lobby or have the needed space for a lobby. FireGuard Slim SE can be used at the point of access and still satisfy the UL 1784 Air Leakage requirement without the use of an artificial bottom seal. Slim SE also includes a vision panel and intermediate exiting device to improve building occupants' experience and satisfy point of access requirements.



Eola Park, Orlando, FL

ELEVATOR LOBBY SEPARATION

Elevator lobbies are required by code to separate the elevator shaft enclosure doors from each floor by fire partitions equal to the fire-resistance rating of the corridor and the required opening protective device. FireGuard Slim, which stays virtually hidden until called into action, is the ideal elevator lobby separation device, protecting building occupants from fire and smoke during an emergency while maintaining a view that is inviting and wide open when not in use.

iSPECIFY It™

Need help specifying?

iSpecifyIt™ is a cutting-edge interactive architectural tool that was developed to help you find your optimal door solution and build a detailed ready-to-submit 3-part spec within minutes. By optimizing the search and specification process, iSpecifyIt maximizes your productivity and connects you to your design team members so you can collaborate and optimize your submittals.

<https://ispecifyit.hortondoors.com/product-types>

CASE STUDY



Application

Corridor Separation

Project

Petersen Automotive Museum
Los Angeles, California

Architect

Kohn Pederson Fox

Project Scope

Originally a department store that opened in 1962, magazine publisher Robert E. Petersen renovated this building to serve as the Petersen Auto Museum in 1994. Following an extensive \$125 million renovation in 2015, it reopened as the iconic structure easily recognizable on Wilshire Blvd. The elevators are protected by FireGuard Slim SE accordion fire doors, hardly noticeable as they stack in a storage pocket waiting to deploy by the building's master alarm.

Configurations

Setting the **Standard** for Fire Protection in Smaller Openings

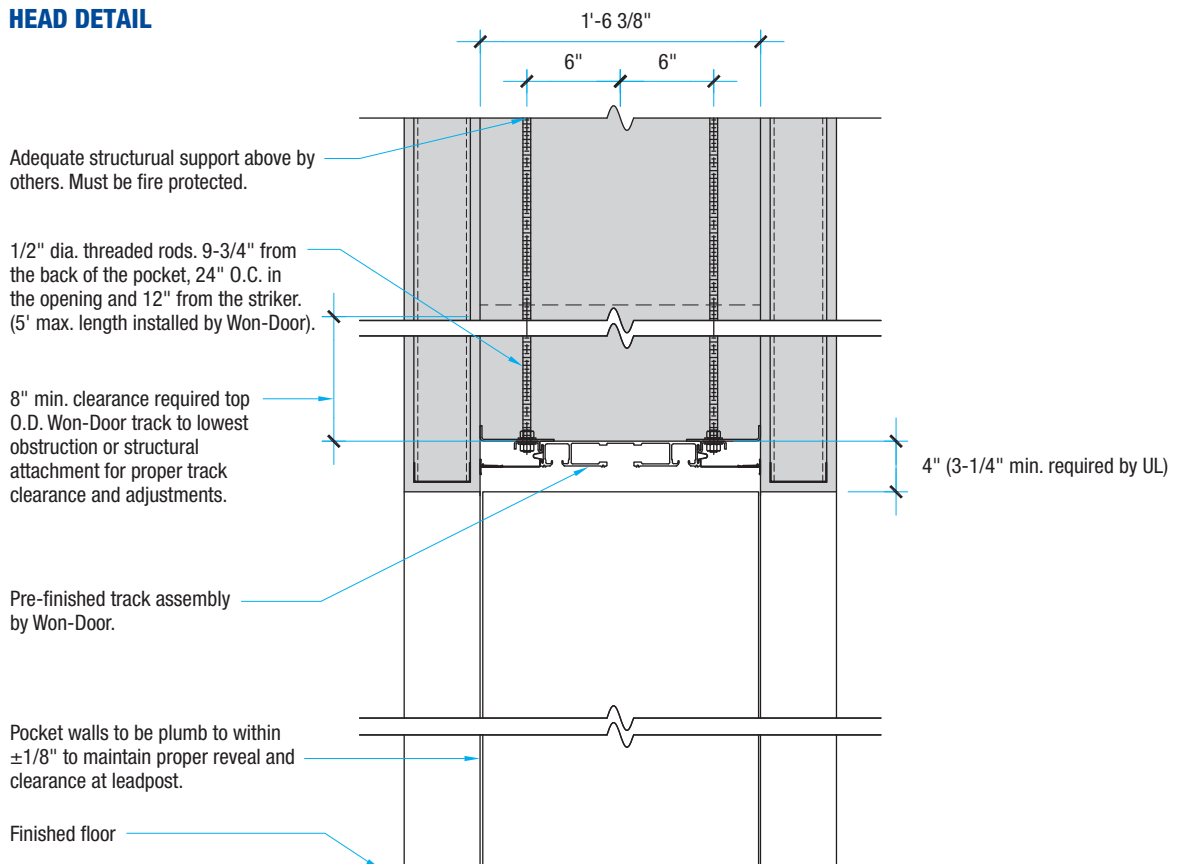
The components that have made Won-Door's FireGuard doors the gold standard of the industry are the same components that make up the new FireGuard Slim:

- Two, independently hung rows of panels made of 24-gauge, corrugated steel and separated by up to 6" of dead air space.
- A header assembly devoid of any wood members and supported from the structure above by 1/2" threaded rods spaced only every 6". Suspending by all-thread rods allows for precision height adjustment during installation.
- The Slim flat leadpost contributes to a finished look at the face of the pocket without having to separately specify a pocket cover door AND houses the control system and operator for reduced pocket depth requirements.
- Slim uses a fixed jamb assembly to further minimize its already industry-leading 14" stack depth.
- An electronically monitored control system provides alerts to any fault conditions.



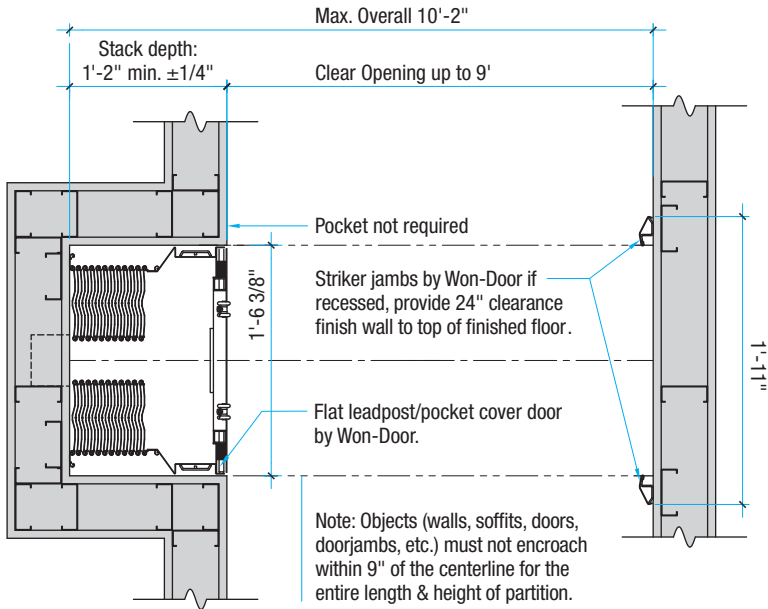
Haas Hall Academy, Rogers, AR

HEAD DETAIL



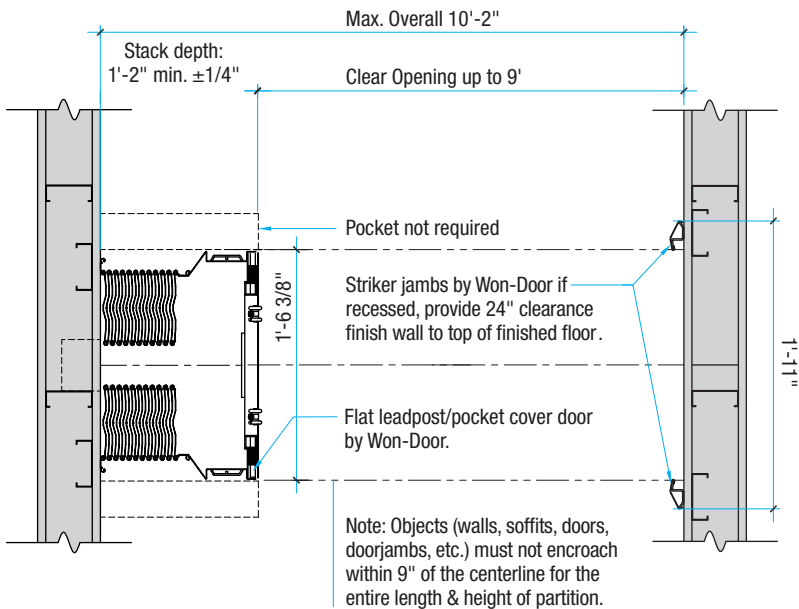
FIREGUARD SLIM POCKET/STRIKE DETAIL

- The flat leadpost and striker jambs are intended to be field painted by others in coordination with surrounding finishes.
- This configuration is perfect for new construction as well as retrofit environments.



FIREGUARD SLIM POCKET/STRIKE DETAIL OPTIONAL SURFACE MOUNTED WITH OPTIONAL POCKET

- Slim utilizes a fixed-jamb that doesn't require a rated pocket.
- This configuration is perfect for retrofit construction.



CASE STUDY



Application

Corridor Separation

Project

Boston Garden – Podium
Boston, Massachusetts

Architect

Gensler

Project Scope

The Boston Garden Podium project employed 10 FireGuard Slim, accordion-folding fire doors at various elevator locations throughout the arena. Including this door separating an elevator lobby and a security checkpoint adjacent to the parking garage.

Specifiable Options

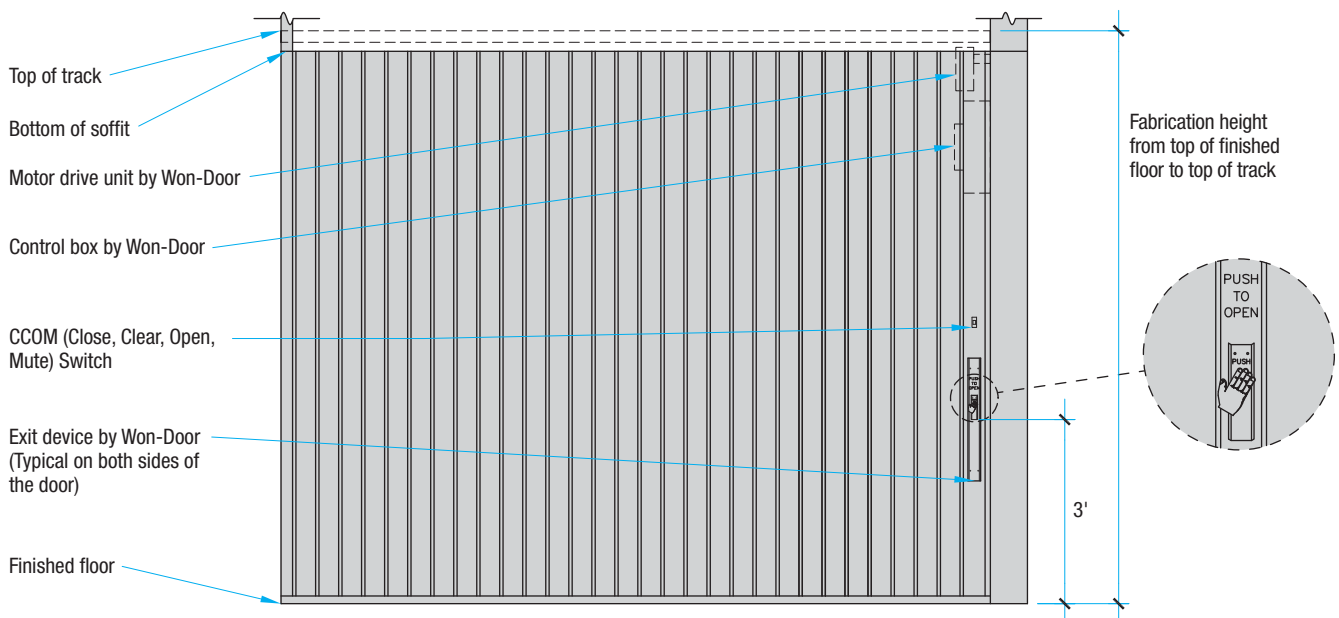


Hazel Wolf K-8 ESTEM School, Seattle, WA

FireGuard Slim is straightforward and uncomplicated to specify. Only a few questions must be answered to obtain comprehensive submittal documents for your project using our patented, new online spec tool—iSpecifyl™:

- Sizing: Slim fits into opening widths as small as 3' and up to 9' wide. Two height options can be selected – either 7' or 8' high.
- A fire-rating of 20, 60 or 90 minutes shall be specified.
- Select Slim's SE option to design this door at the point of access to an elevator car.
- Because this is a fixed jamb application, FireGuard Slim can be built with or without pocket walls.

ELEVATION DETAIL



PRODUCT COMPARISON

	FireGuard Slim	Swinging Doors
Clear Opening Width	Up to 9' wide	Double doors – up to 8' wide (two 4' leaves)
Height	7' or 8' options	Up to 8' high
Cost	\$ 9,990 (9' or 8' installed)	—
Exposed Hardware	Concealed	Exiting devices, door closers, magnetic hold-opens, astragals, center support columns, handle, latches
Fire-Rating	Up to 90 minutes	—

MEANS OF EGRESS APPLICATIONS

Applications	2015 IBC ¹	2018 IBC ¹	2021 IBC ¹
Building Code Reference	1010.1.2 exc #6	1010.1.2 exc #6	1010.1.2 exc #6
Performance Criteria	1010.1.4.3	1010.1.4.3	1010.3.3

PRODUCT INFORMATION

Model Number	Hourly Rating	Test Criteria	U.L. File Number
Door Assembly FireGuard FG20	20 minutes	UL 10B (ASTM E-2074) ³	R6799
Door Assembly FireGuard FG60²	1 hour	UL 10B (ASTM E-2074) ³	R6799
Door Assembly FireGuard FG90²	1-1/2 hours	UL 10B (ASTM E-2074) ³	R6799

¹ Any application without occupant load limitation except H occupancies.

² Each door assembly, when required, complies with UL 1784.

³ Excluding cotton pad test.

iSPECIFY It™

Experience the future of spec writing today

iSpecifyIt™ is a cutting-edge interactive architectural tool that was developed to help you find your optimal door solution and build a detailed ready-to-submit 3-part spec within minutes. By optimizing the search and specification process, iSpecifyIt maximizes your productivity and connects you to your design team members so you can collaborate and optimize your submittals.

<https://ispecifyit.hortondoors.com/product-types>

CASE STUDY



Application

Elevator Lobby

Project

Fifth Street Towers
Minneapolis, Minnesota

Architect

SHEA

Project Scope

Protecting elevator lobbies of several floors in this downtown Minneapolis high-rise are FireGuard Slim, accordion folding fire doors. Competitively priced against traditional swinging fire doors on magnetic hold opens and preserving the aesthetics of the surrounding architecture, FireGuard Slim is your best choice for opening protectives in openings up to 9' wide and 8' high.

Fire Safety by Design



Founded in 1962, the Won-Door Corporation introduced the world's most durable acoustically rated folding partition. In 1977 the company pioneered the development of the first-ever accordion-type, fire rated horizontal sliding door. Today, more than 60 years later, Won-Door remains the industry leader in the manufacture of accordion-type fire doors and movable firewalls. Technology developed by Won-Door engineers continues to influence the building products and fire protection industries.

Setting the Standard

FIRST TO GAIN UNIVERSAL ACCEPTANCE: The development of the accordion type, horizontal sliding fire door, as manufactured by the Won-Door Corporation, has had a profound influence on the model code requirements that regulate their use, leading to its universal acceptance for use in virtually any means of egress application.

FIRST TO BE UL LISTED: The Won-Door FireGuard was the first accordion type fire door to successfully pass nationally recognized tests to withstand the passage of fire. Won-Door FireGuard products are listed by Underwriters Laboratories Inc. (UL) for up to 3 hours as a rated door assembly and 2 hours as a movable fire wall.

STILL ON THE CUTTING-EDGE: Only Won-Door FireGuard doors have a Flat Lead Post option that eliminates the need for a pocket cover door. This option, along with our compressed stack panels, combine to reduce traditional stack depths by up to 50%.



Horton Pedestrian Access Solutions

- Horton Automatics®
- Door Services Corporation®
- Won-Door®

Won-Door Corporation

1865 South 3480 West
Salt Lake City, UT 84104 USA
Phone: 800-453-8494

www.wondoer.com

Overhead Door Corporation

A Sanwa Holdings Company